


# AGT-OUTDOOR Outdoor LoRaWAN® Gateway


OUTDOOR GATEWAY • PoE

## Performances


 Up to 15kms range (LOS)  
1-5kms in urban area

 8 radio channels

## Power Supply

 PoE 24V – 0.5A

## Connectivity

 Internal or external  
Network server (TTN,  
ACTIVITY, LORIoT)

 WiFi

 Bluetooth



The AGT/OUTDOOR Gateway is an Industrial Outdoor gateway for private LoRaWAN™ networks.

Simple to use, this gateway offers the largest selection of configurations and management modes and this, whatever your IoT application. It can be interfaced with all types of network servers.

The LoRa™ gateway operates in multi-channel mode and accepts multiple connections.

Its IP66 casing is designed for strong RF performances and robust environments.

The 1GATE gateway is ready to use while be customizable with its open-source software. Initially configured as Packet-Forwarder and has been tested with the most common networks servers (TTN, Actility, Lorient)



**ATIM Radiocommunications**

Chemin des Guillets  
38250 Villard de Lans  
France

[www.atim.com](http://www.atim.com)  
[info@atim.com](mailto:info@atim.com)  
+33 4 76 95 50 65



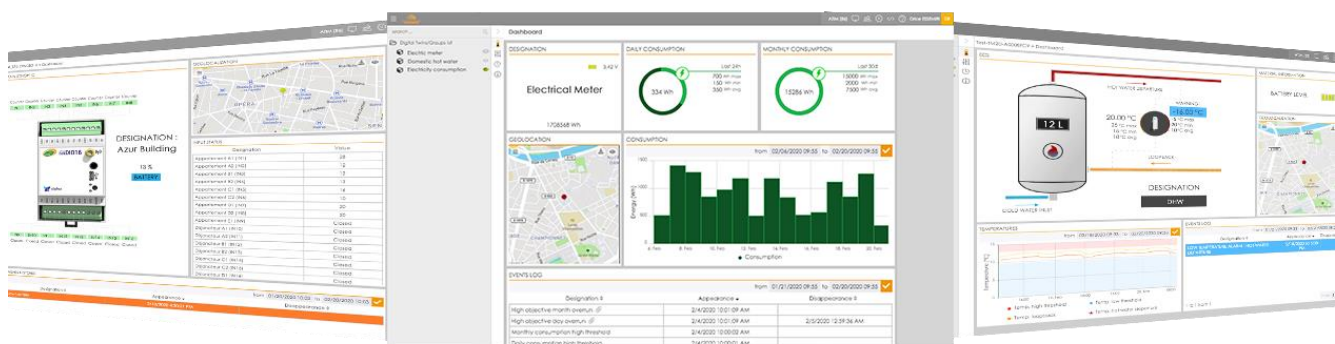
## Technical features

<b>Dimensions</b>	280 x 200 x 80 mm
<b>Antenna</b>	External (N connector)
<b>Temperature</b>	-20°C to +55°C (operating mode) -30°C to +85°C (storage)
<b>Mounts to</b>	Mast
<b>Housing</b>	Grey cast aluminium IP66
<b>Power supply</b>	PoE 24V – 0.5A
<b>Weight</b>	1500g
<b>Frequency</b>	865 – 870 MHz
<b>Power</b>	25mW (14 dBm max)
<b>Datarate</b>	LoRaWAN: 300 bit/s to 10 kbit/s
<b>RF Core</b>	Semtech SX1301
<b>Wifi</b>	802.11 bgn
<b>Bluetooth</b>	4.1 (BLE)
<b>Ethernet</b>	10/100 Mbps
<b>USB</b>	4 ports

## References

- AGT/OUTDOOR  
**Outdoor version**

## ATIM Cloud Wireless™ Platform (option)



Control all your ATIM devices using Sigfox and LoRa on the same secured Web platform!  
Manage and operate your IoT data very easily.  
Thanks to new LPWAN networks, device remote management is simple and accessible to anyone.

- Managing the products by groups
- Real time visualisation
- Signal quality
- Mobile app
- Emails & SMS alerts
- Secured API
- Export your data
- On-call management
- Products geolocation
- Personalization: white label
- Downlinks



**ATIM Radiocommunications**  
Chemin des Guillets  
38250 Villard de Lans  
France

www.atim.com  
info@atim.com  
+33 4 76 95 50 65

