

# ACW-DINRSM

## Modbus master gateway

SMART INDUSTRY – SMART BUILDING – GATEWAY MODBUS

### Networks

-  Sigfox™
-  LoRaWan®
-  Gateway Modbus / LPWAN





### Performances

-  Range: up to 15km

### Autonomy

-  External power

### Divers

-  Configuration by USB
-  Configuration by downlink
-  SMS et Emails alerts
-  Web and mobile interfaces



As a master Modbus modem, the ACW-DIN-RSM can retrieve data from one or more Modbus devices and send them to an LPWAN network (Sigfox or LoRaWAN).

The ACW-DIN-RSM is commonly used behind PLCs or measurement acquisition systems: electricity meters, weather station, sensors, etc ... Four Modbus read function codes are supported: from 0x01 to 0x04.

**Writing** function is available on LoRa device.  
LoRaWAN class C.

Able to transmit **49 Modbus requests**, up to 49 different devices can be addressed. The collected data can be transmitted on 6 frames/hour on Sigfox, or on 15 frames/hour on LoRaWAN network.



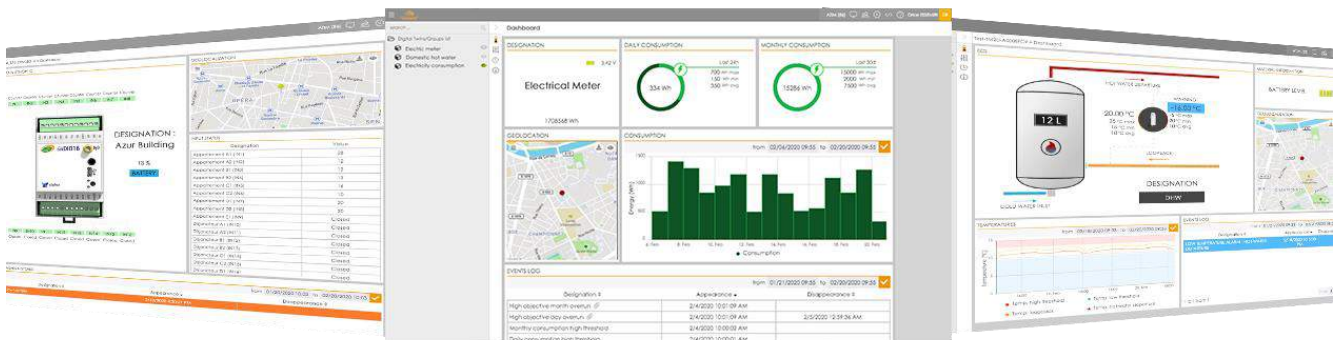
## Technical features

<b>Dimensions</b>	90 x 57 x 17.9 mm	
<b>Antenna</b>	External antenna by SMA connector	
<b>Temperature</b>	-20°C to +55°C (operating mode) -40°C to +70°C (storage)	
<b>Mounts to</b>	DIN Rail	
<b>Housing</b>	DIN Rail compliant	
<b>Power supply</b>	External power supply, 10-30Vcc	
<b>Frequency</b>	865 – 870 MHz	
<b>Power</b>	25mW (14 dBm)	
<b>Rate</b>	Sigfox: 100 bps LoRaWAN: 300 bit/s to 10 kbit/s	
<b>Consumption (24 V)</b>	Sigfox	LoRaWAN
<b>Tx Mode</b>	40 mA	25 mA
<b>Rx Mode</b>	30 mA	10 mA

## References

- ACW/LW8-DINRSM  
**Version LoRaWAN**
- ACW/SF8-DINRSM  
**Version Sigfox**

## ATIM Cloud Wireless™ Platform (option)



Control all your ATIM devices using Sigfox and LoRa on the same secured Web platform!  
Manage and operate your IoT data very easily.  
Thanks to new LPWAN networks, device remote management is simple and accessible to anyone.

- Managing the products by groups
- Real time visualisation
- Signal quality
- Mobile app
- Emails & SMS alerts
- Secured API
- Export your data
- On-call management
- Products geolocation
- Personalization: white label
- Downlinks



**ATIM Radiocommunications**  
Chemin des Guilletes  
38250 Villard de Lans  
France

www.atim.com  
info@atim.com  
+33 4 76 95 50 65

