



atim cloud wireless™  
PRODUCT LINE

# ACW-SF8-TST

Test – Network – Sigfox

## Performances



Simplicity: 1 button, 1 LED,  
test results in a few seconds

## Autonomy



Rechargeable battery via  
micro USB port



This tester enables you to accurately evaluate the Sigfox network coverage quality. A multicolored LED displays a color according to the coverage quality at your location. Test frames emitted by the push of the central button are visible on our ATIM ACW Platform, and on your national Sigfox operator's backend.

Very useful for discovering and mastering LPWAN technologies and the realization of "Proof of Concept".



## ATIM Radiocommunications

Chemin des Guillets  
38250 Villard de Lans  
France

www.atim.com  
info@atim.com  
+33 4 76 95 50 65



## Technical features

<b>Dimensions</b>	90 x 45 x 15 mm
<b>Housing</b>	Plastic
<b>Power Supply</b>	Internal LiPo Battery 325mAh, rechargeable via micro USB port (micro USB wire not included)
<b>Weight</b>	30g
<b>Frequency</b>	868 MHz
<b>RF Power</b>	25mW (14 dBm)

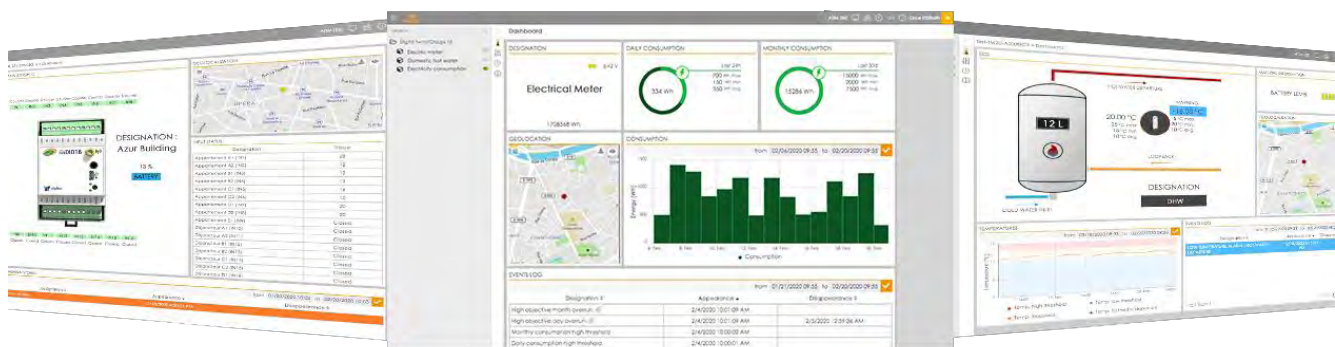
## Reference

- ACW/LW8-TST  
**Version LoRaWAN**
- ACW/SF8-TST  
**Version Sigfox**

## RSSI table

<b>Excellent</b>	<b>Green</b>	>-119 dBm
<b>Good</b>	Yellow	from -120dBm to -135dBm
<b>Low</b>	Purple	≤ -136dBm
<b>Null</b>	Red	No network
	White	Waiting network feedback (downlink)

## ATIM Cloud Wireless™ Platform (option)



Control all your ATIM devices using Sigfox and LoRa on the same secured Web platform!  
Manage and operate your IoT data very easily.  
Thanks to new LPWAN networks, device remote management is simple and accessible to anyone.

- Managing the products by groups
- Real time visualisation
- Signal quality
- Mobile app
- Emails & SMS alerts
- Secured API
- Export your data
- On-call management
- Products geolocation
- Personalization: white label
- Downlinks



### ATIM Radiocommunications

Chemin des Guillets  
38250 Villard de Lans  
France

www.atim.com  
info@atim.com  
+33 4 76 95 50 65

