

ACW-TO-G

Temperature & GPS modem (IP66 version)

OUTDOOR • ALERT • SMART CITY/BUILDING •
ASSET TRACKING

Networks



Sigfox™



LoRaWAN®



Compatibility with Sigfox
ACW-GW repeater

Performances



Range: up to 15km

Autonomy



Eco-energy mode: from 3 to 5
years



Periodic mode: 2 years
assuming 1 Tx/h



Two Lithium AA batteries



Power level alerting

Divers



USB setup



Downlink setup



SMS & Emails alerts



Web platform



IP66 housing



Class 0

ACW-TO-G is a device for measuring the **ambient temperature while geolocating it**. The case is waterproof, but it let air through. Data is transmitted periodically and in the event of an alert that thresholds are exceeded.

Thanks to the **"Eco-energy" mode** now available, it is possible to drastically reduce the number of emissions in order to **extend battery life by up to 5 times**, thereby reducing your operating costs and your impact on the environment.

In the event of an anomaly, an email or SMS will be instantly sent to one or more recipients previously configured.

This **Geolocated temperature sensor** exists in different versions intended to operate on the new **LPWAN** networks dedicated to the Internet of Things such as Sigfox or LoRaWAN. Ideal for monitoring your equipment on the Web, it is perfectly suited for monitoring buildings in the service sector or industry.



ATIM Radiocommunications

Chemin des Guillets
38250 Villard de Lans
France

www.atim.com
info@atim.com
+33 4 76 95 50 65



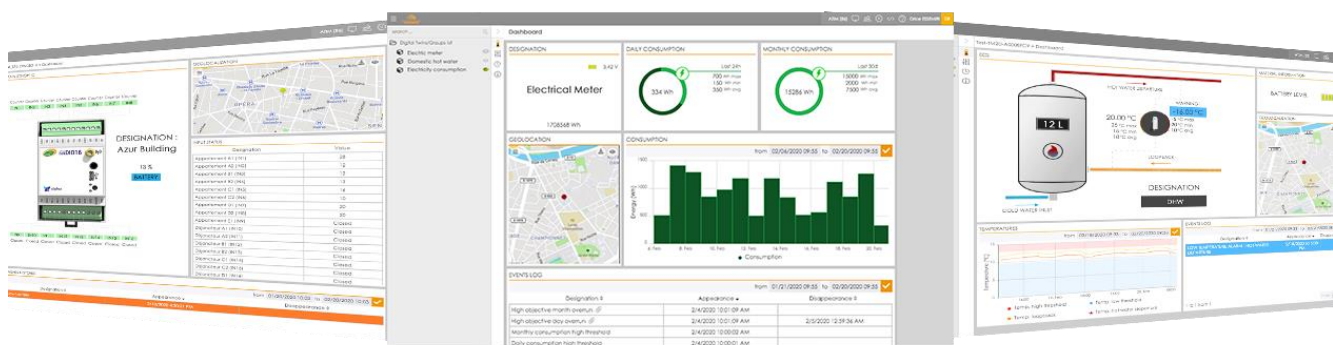
Technical features

Dimensions	100 x 100 x 35 mm		
Antenna	Integrated (¼ wave)		
Temperature	-20°C to +55°C (operating) -40°C to +70°C (storage)		
Mounts to	Wall		
Housing	PVC IP66 compact		
Power supply	2x Lithium AA batteries		
Weight	100 g		
Frequency	865 – 870 MHz		
Power	25 mW (14 dBm)		
Rate	Local: 1.2 to 115 Kbit/s Sigfox: 100 bit/s LoRaWAN: 300 bit/s to 10 Kbit/s		
Consumption	Local	Sigfox	LoRaWAN
Tx Mode	60 mA	60 mA	50 mA
Standby Mode	7 µA	7 µA	7 µA
Rx Mode	35 mA	35 mA	18 mA

References

- ACW/SF8-TO-G Sigfox
- ACW/LW8-TO-G LoRaWAN

ATIM Cloud Wireless™ Platform (option)



Control all your ATIM devices using Sigfox and LoRa on the same secured Web platform!

Manage and operate your IoT data very easily.

Thanks to new LPWAN networks, device remote management is simple and accessible to anyone.

- Managing the products by groups
- Real time visualisation
- Signal quality
- Mobile app
- Emails & SMS alerts
- Secured API
- Export your data
- On-call management
- Products geolocation
- Personalization: white label
- Downlinks



ATIM Radiocommunications

Chemin des Guillettes
38250 Villard de Lans
France

www.atim.com
info@atim.com
+33 4 76 95 50 65

