

# ACW-DINDA

## Analog input radio modem

ANALOG • ALERT • IoT CLOUD • USB

### Networks



Sigfox™



LoRaWan®

### Performances



Range: up to 15km

### Autonomy



External power supply

### Divers



Configuration by USB



SMS and email alerts



Web platform



The ACW-DINDA allows you to send up to **144 values** per day coming from **one analog input (4/20mA or 0/10V)**. It is the perfect device to send the status of a **remote isolated sensor**, like a water level or the degree of filling of a tank.

It features a **low power consumption** because it manages the current loop power supply for the external sensor.

This modem works on **new LPWAN networks dedicated to the IoT**: Sigfox, LoRaWAN.

The ACW-DIN DA is a highly reliable solution used by professionals to maintain on the web an **accurate and efficient** supervision of their remote assets. It is designed for a **smooth and easy installation** where there is no traditional communication coverage.



**ATIM Radiocommunications**

Chemin des Guillets  
38250 Villard de Lans  
France

www.atim.com  
info@atim.com  
+33 4 76 95 50 65



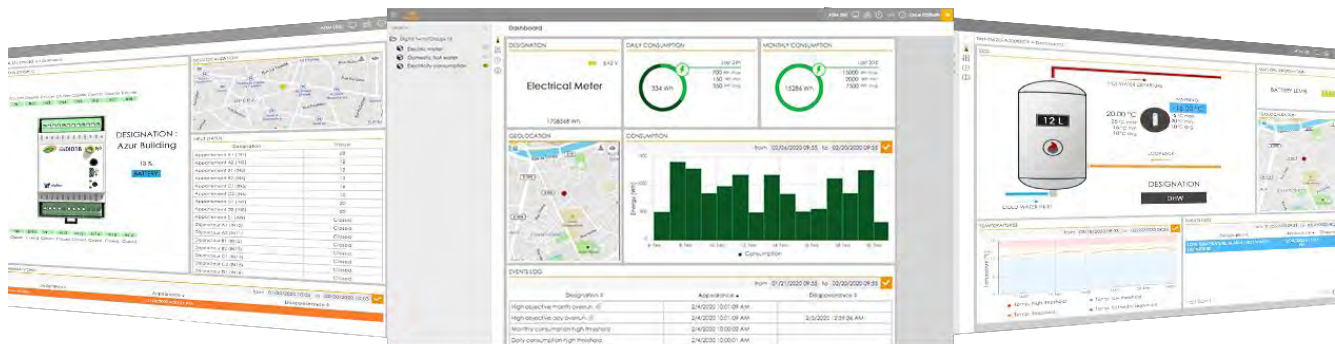
## Technical features

<b>Dimensions</b>	90 x 57 x 17,9 mm	
<b>Weight</b>	50g	
<b>Input</b>	1 analog input and 2 digital input	
<b>Antenna</b>	External via SMA connector	
<b>Temperature</b>	-20°C to +55°C (operation) -40°C to +70°C (storage)	
<b>Mounts to</b>	DIN rail compliant	
<b>Housing</b>	Compact DIN format	
<b>Power supply</b>	External 10-30Vcc	
<b>Frequency</b>	865 – 870 MHz	
<b>Power</b>	25 mW (14 dBm)	
<b>Rate</b>	Sigfox: 100 bit/s LoRaWAN: 300 bit/s to 10 Kbit/s	
<b>Consumption</b>	Sigfox	LoRaWAN
<b>Tx mode</b>	60 mA	50 mA
<b>Rx mode</b>	35 mA	18 mA

## References

- ACW/SF8-DINDA  
**Sigfox Version**
- ACW/LW8-DINDA  
**LoRaWAN Version**

## ATIM Cloud Wireless™ Platform (option)



Control all your ATIM devices using Sigfox and LoRa on the same secured Web platform!  
 Manage and operate your IoT data very easily.  
 Thanks to new LPWAN networks, device remote management is simple and accessible to anyone.

- Managing the products by groups
- Real time visualisation
- Signal quality
- Mobile app
- Emails & SMS alerts
- Secured API
- Export your data
- On-call management
- Products geolocation
- Personalization: white label
- Downlinks



### ATIM Radiocommunications

Chemin des Guillet  
 38250 Villard de Lans  
 France

www.atim.com  
 info@atim.com  
 +33 4 76 95 50 65

